



TS2100 Series

TS2100 Bridge-style Tripod Turnstile

TS2111 Bridge-style Tripod Turnstile
(w/ controller and RFID reader)

TS2122 Bridge-style Tripod Turnstile
(w/ controller and combination fingerprint & RFID reader)

The ZKAccess TS2100 bridge-style tripod turnstile series is a compact and cost-effective entrance control system designed for high-traffic volume.

The TS2100 series is designed for smooth and silent operation and draws very little power. It's made of highly durable stainless steel which makes TS2100 highly durable. TS2100 pedestal is only 7 inches (17.8 cm) wide and designed to operate in small work places. If you prefer instead a 10 inch (25.4 cm) wide pedestal, select model TS2000.

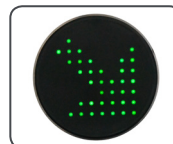
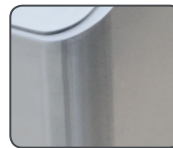
TS2100 tripod arms are normally held in a locked position, thus denying passage to the secured side. Upon TS2000's reader (RFID and/or fingerprint) positively recognizing a user's valid access card or fingerprint, its tripod arms unlock, thus allowing users passage to the secured side.

Option for built-in REX button allows users to conveniently exit the secured side without needing to use their access card or fingerprint.

During emergencies and power outages the tripod arms completely collapse, thereby ensuring users FAST unencumbered exit to safety.

TS2100 provides both **security** and **convenience**, all in a very durable compact design.

Features



Reliability

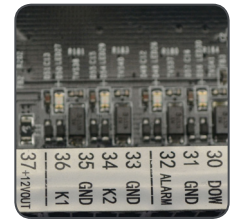
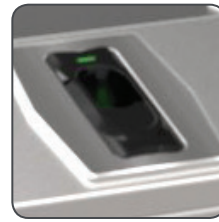
- Alloy steel tripod hub and SUS304 stainless steel casework & tripod arms ensure long-lasting durability.
- Power conservation. Electro-magnetic locks remain in "standby mode" until turnstile motor is activated.
- Patented oil lubrication system reduces need for maintenance.
- High quality electrical components

Safety Features

- Tripod-arms unlock & drop during emergencies/power loss.
- All smooth finish
No exposed screws or fasteners
- Visual indicator for access granted (or denied)
- Ergonomic design makes card and fingerprint authentication fast & simple for users.
- Secure. Supports Anti-tailgating.

Built-in Reader Integration

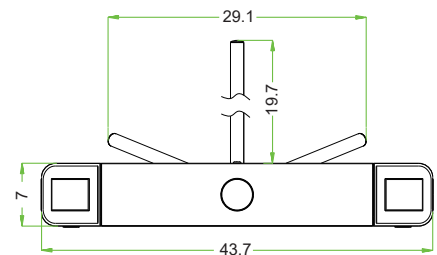
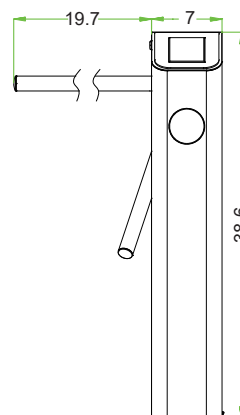
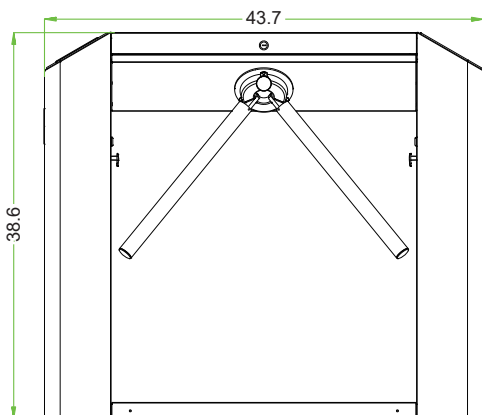
- TS2100 series ships already integrated with our customers' preference for either card or fingerprint access control reader. This greatly reduces installation time & expense.
- TS2100 series and associated access control readers are all factory-tested prior to shipping.
- ZKAccess provides true plug 'n play turnstiles with the lowest possible total cost of ownership in the industry!



Specifications

| | |
|---|--|
| Power Supply | AC 220V/110V, 50/60Hz |
| Operating Temperature | -18F to 140F degrees |
| Operating Humidity | 5%-85% |
| Working Environment | Indoor/Outdoor (if sheltered) |
| Rated Power | 60W |
| Traffic Throughput | 25-48 passages per minute |
| Casework Material | SUS304 stainless steel |
| Visual Indicator | Yes. Access granted/denied |
| Control System | Input controlled by dry contact |
| Emergency Button Input | Yes |
| Turnstile Dimension | 43.7 x 38.6 x 7 inches + arm length 19.7 inches (111 x 98 x 17.8 centimeters + arm length 50 centimeters) |
| Wooden Crate Dimension | 47 x 42 x 15 inches |
| Turnstile Weight | 99 lbs. (44.9 kg) |
| Turnstile and Wooden Crate Combined Weight | 117 lbs. (53.07 kg) |

Dimensions (inches)



ZKTeco USA

6 Kingsbridge Road, Unit 8, Fairfield, NJ 07004
 Phone: (862) 505-2101 • Fax: (862) 204-5906 • sales@zkaccess.com • www.zkaccess.com

© Copyright 2016. ZKTeco Inc. ZKTeco Logo and ZKAccess Logo are registered trademarks of ZKTeco or a related company. All other product and company names mentioned are used for identification purposes only and may be the trademarks of their respective owners. All specifications are subject to change without notice. All rights reserved.

